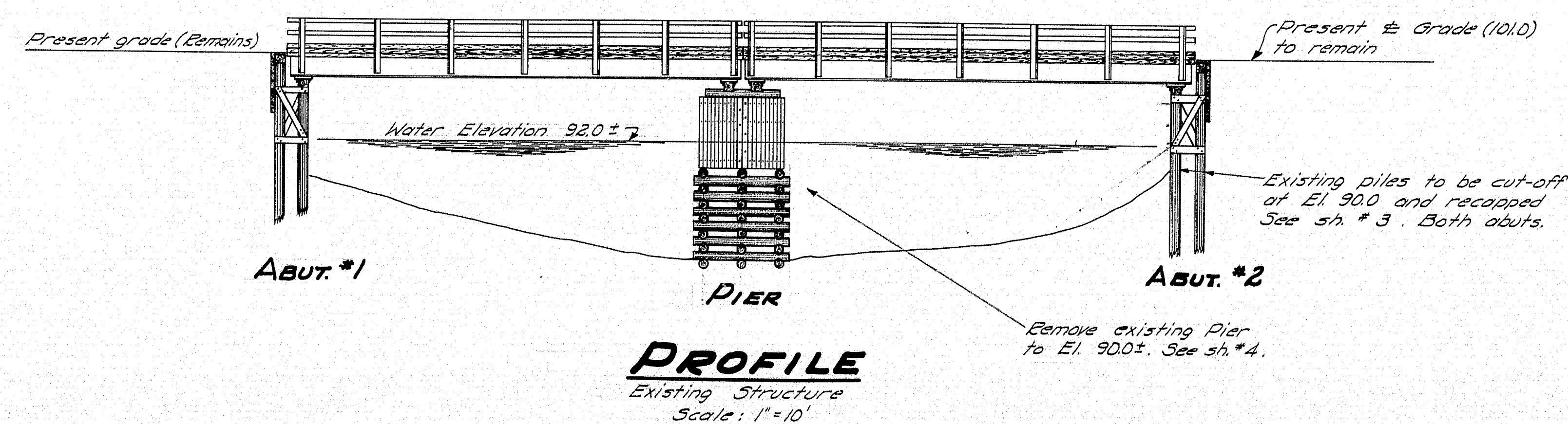


**STEEL DIAGRAM**  
Existing Structure  
Span # 2 similar - Rotate 180°-00'

**NOTE:** All information taken from  
Survey Plan dated 1929 &  
Structural Plans dated 1936

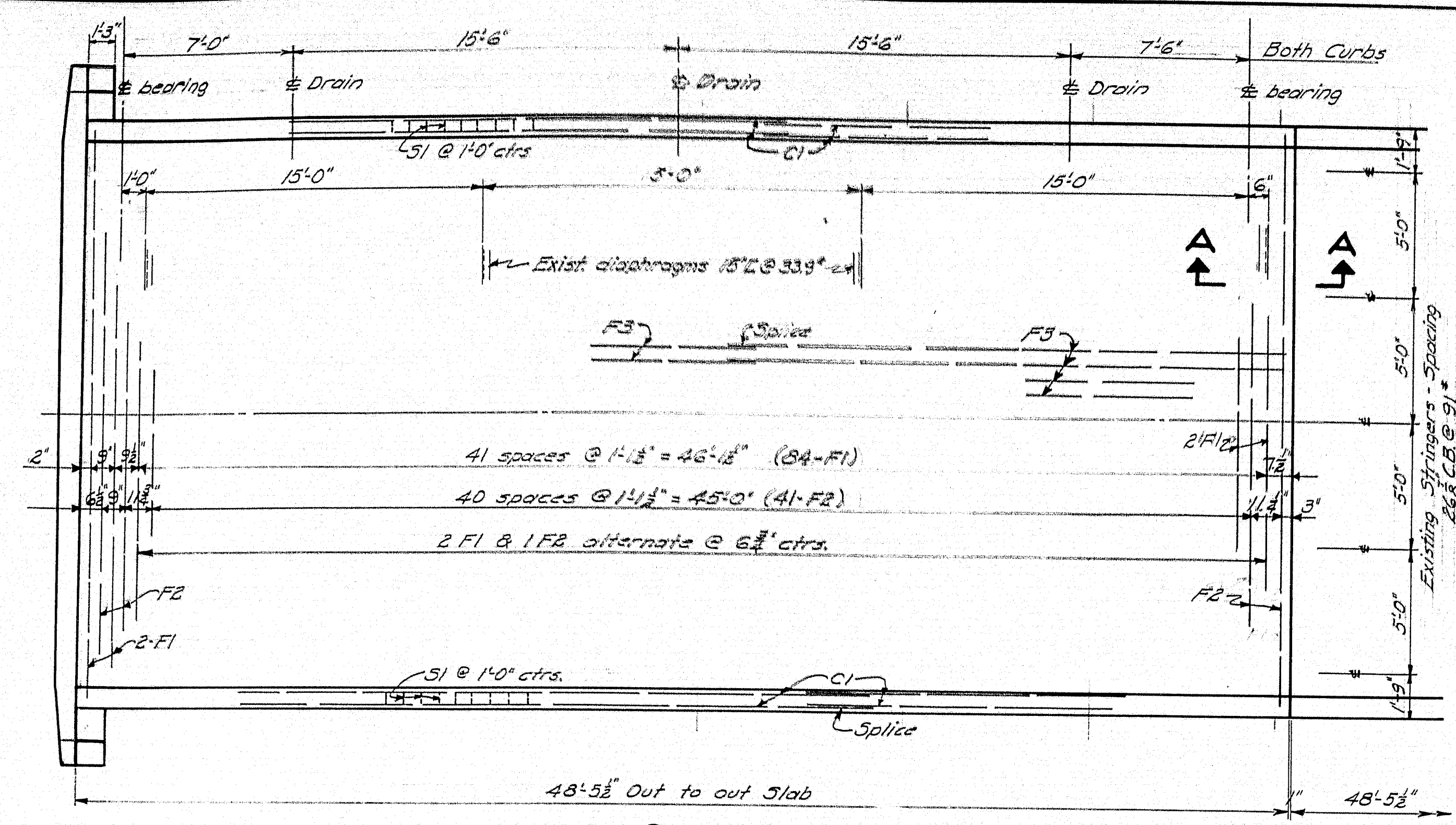


PLAN - MACDONALD	BRIDGE - 2112
TRACE - CLARK	
CHECK - <i>CL</i>	
STATE HIGHWAY COMMISSION	
BRIDGE DIVISION	
<b>BURNHAM BRIDGE</b>	
OVER	
<b>COBOSSEECONTEE STREAM</b>	
BETWEEN THE TOWNS OF	
<b>W. GARDINER &amp; LITCHFIELD</b>	
<b>KENNEBEC COUNTY</b>	
EXISTING STRUCTURE	
SHEET /	OF 4 AUGUSTA, MAINE SEPT. 1949

47-15

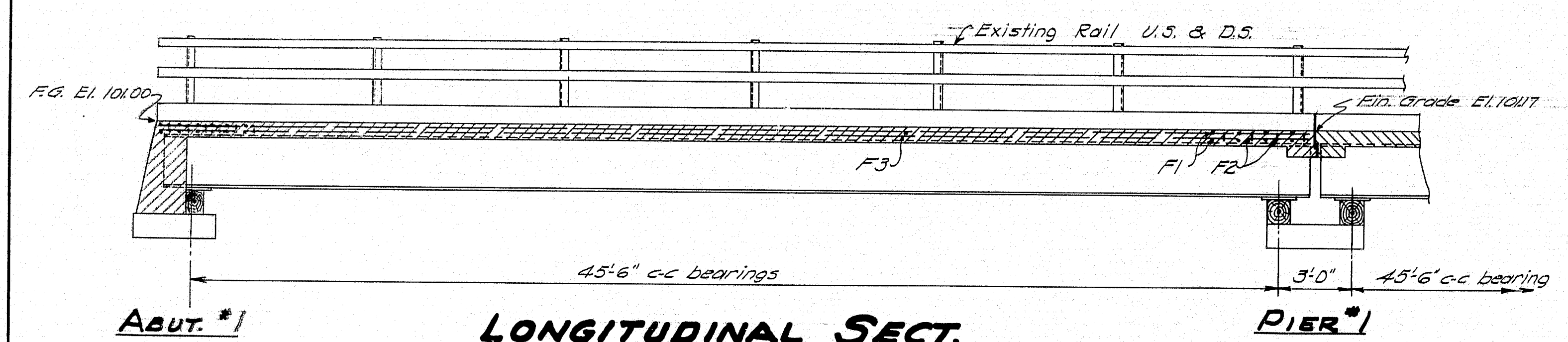
0 1 2 3 4 5 INCHES



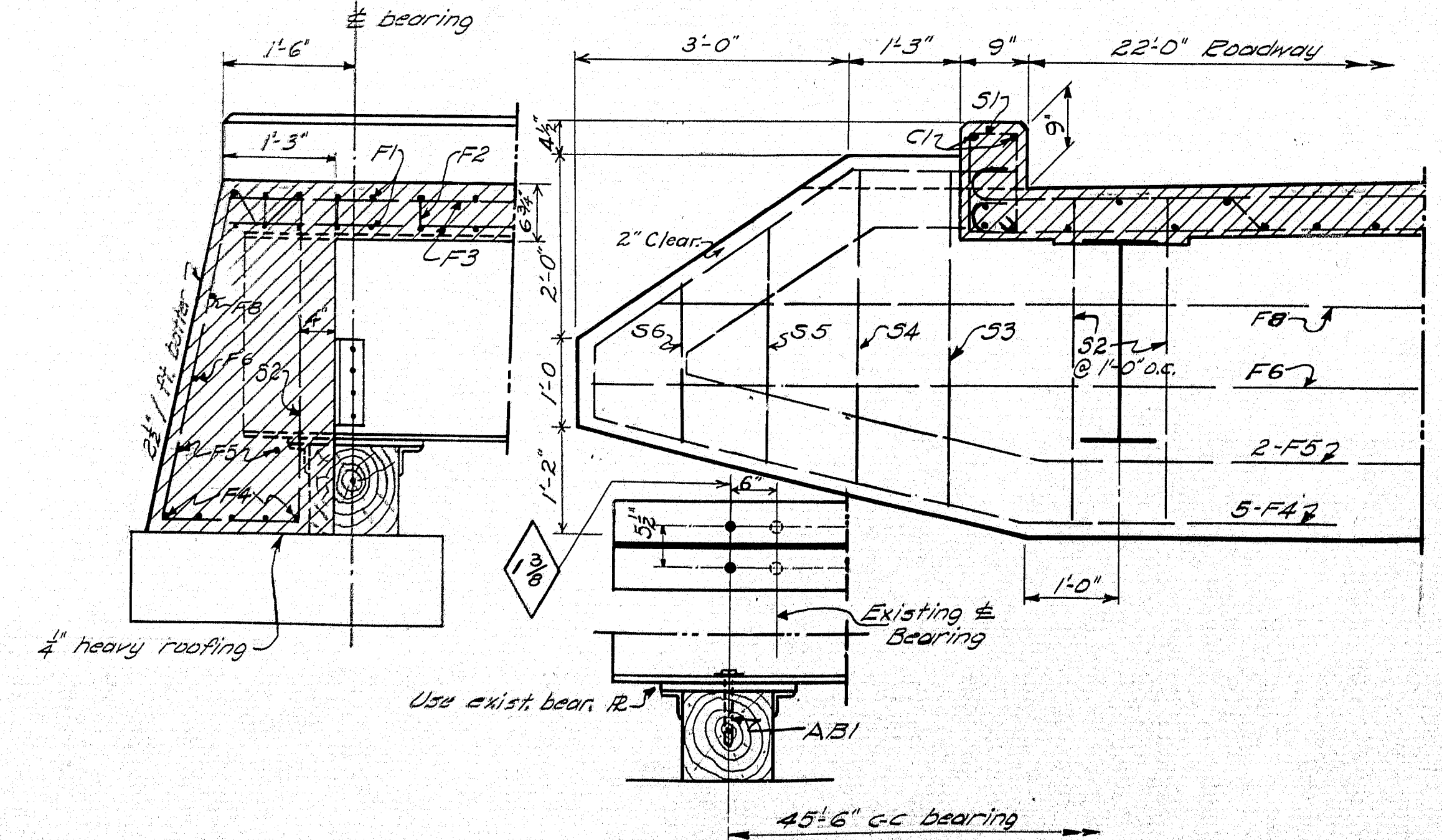


**SPAN #1  
HALF PLAN**

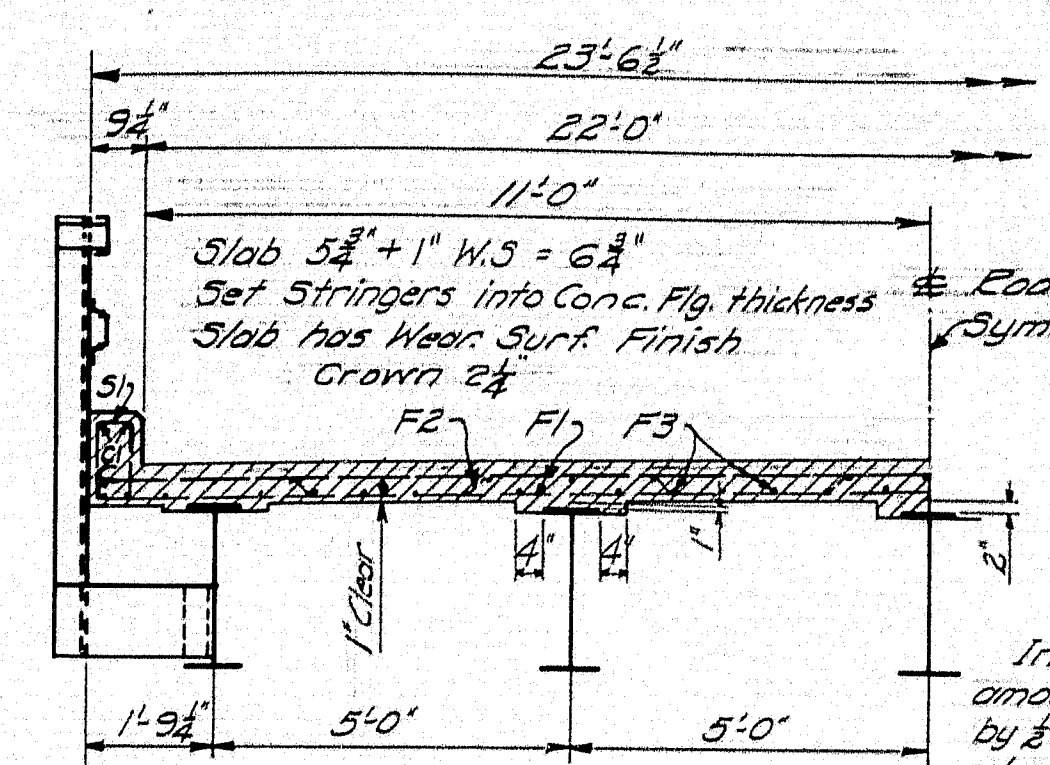
**SPAN #2**  
Span #2 is similar to Span #1, Rotate 180°



**LONGITUDINAL SECT.**

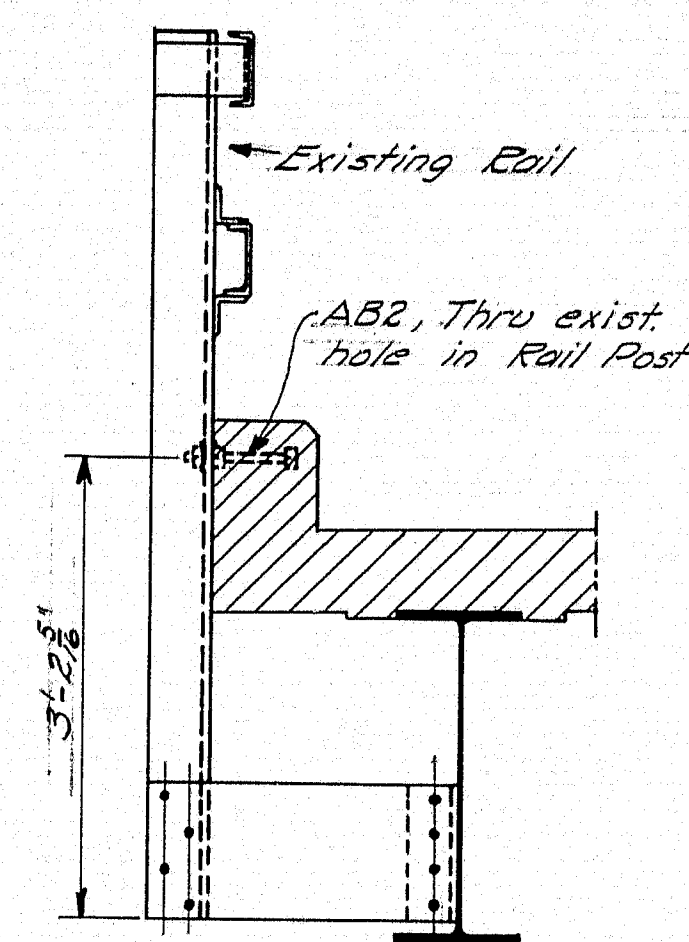


**DROP WALL & BEARING DETAIL**

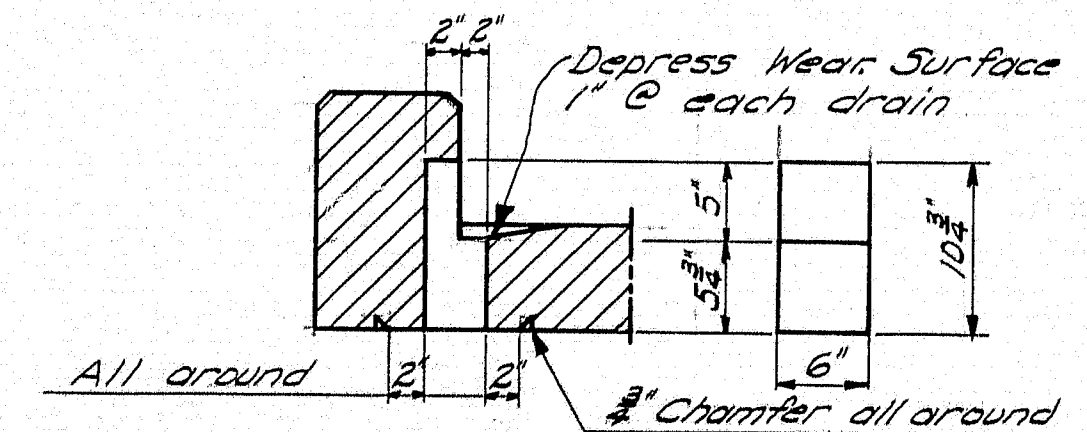


**TRANSV. SECT.**

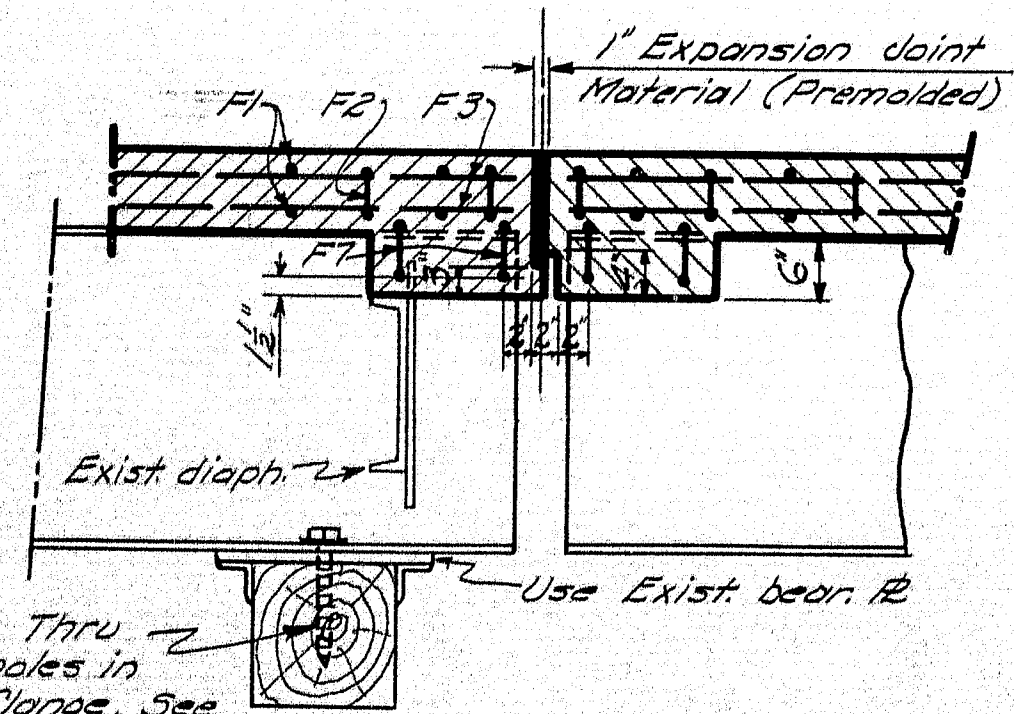
**NOTE:**  
Increase the amount of blocking by 1/2" at each stringer at mid-span to allow for dead load deflection.



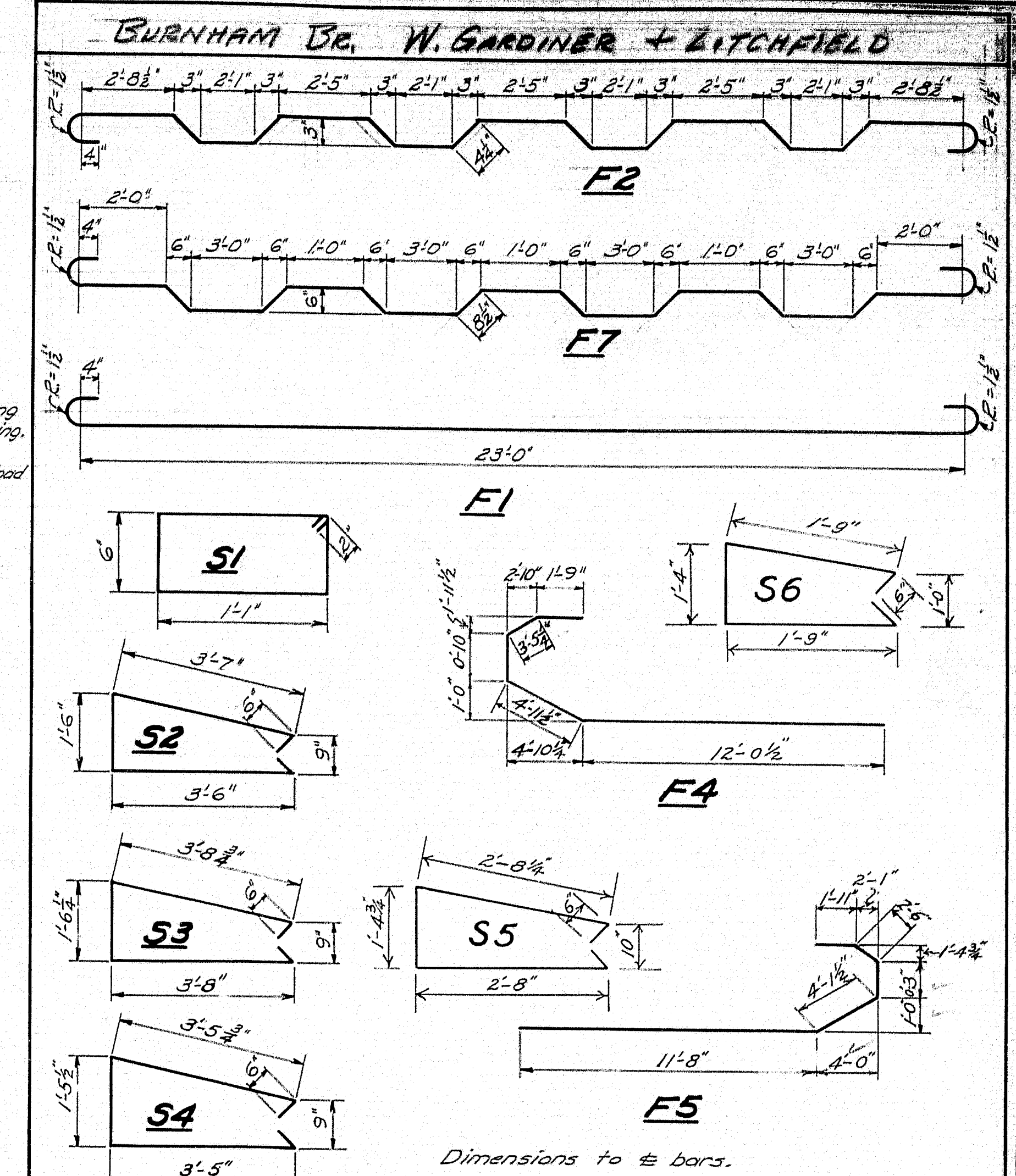
**POST CONN.**  
Post to Curb



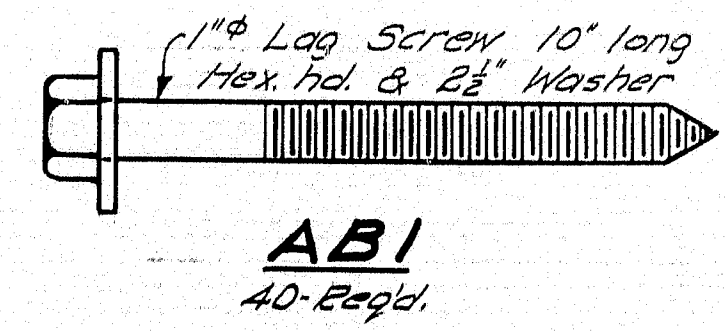
**METAL DRAIN**  
2" x 2" Galv. Iron - 12 Ea'g'd.



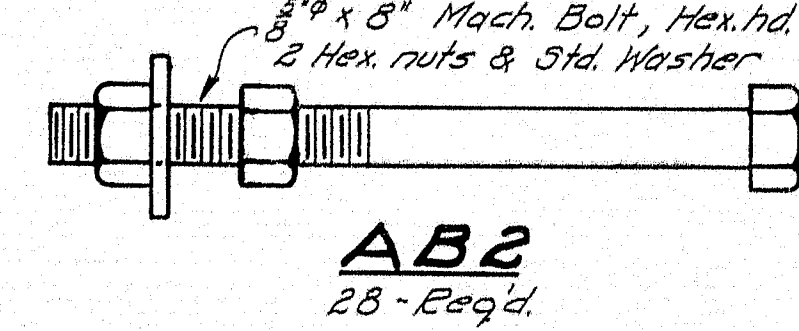
**SECT. A-A**



STRAIGHT BARS					BENT BARS				
Mark	Size	No.	Length	Location	Mark	Size	No.	Length	Location
C1	3/8"	16	25'-0"	Curb	F1	3/8"	176	24'-5"	Slab
F3	3/8"	180	25'-0"	Slab	F2	3/8"	88	25'-3"	"
F6	3/8"	2	31'-8"	Drop Wall	F4	3/8"	20	23'-0"	Drop Wall
F8	3/8"	2	30'-0"	Drop Wall	F5	3/8"	8	20'-5 1/2"	"
					F7	3/8"	4	26'-1"	Slab
					S1	3/8"	196	3'-6"	Curb
					S2	3/8"	44	9'-7"	Drop Wall
					S3	3/8"	4	9'-11"	"
					S4	3/8"	4	9'-4"	"
					S5	3/8"	4	7'-9"	Drop Wall
					S6	3/8"	4	5'-10"	Drop Wall



**AB1**  
40 Ea'g'd.



**AB2**  
28 Ea'g'd.

Concrete - Class A  
Loading - H15-44  
Fs = 18,000 psi  
Fc = 1,200 psi  
n = 10

DESIGN - MACDONALD  
TRACE - CLARK  
CHECK - CLARK

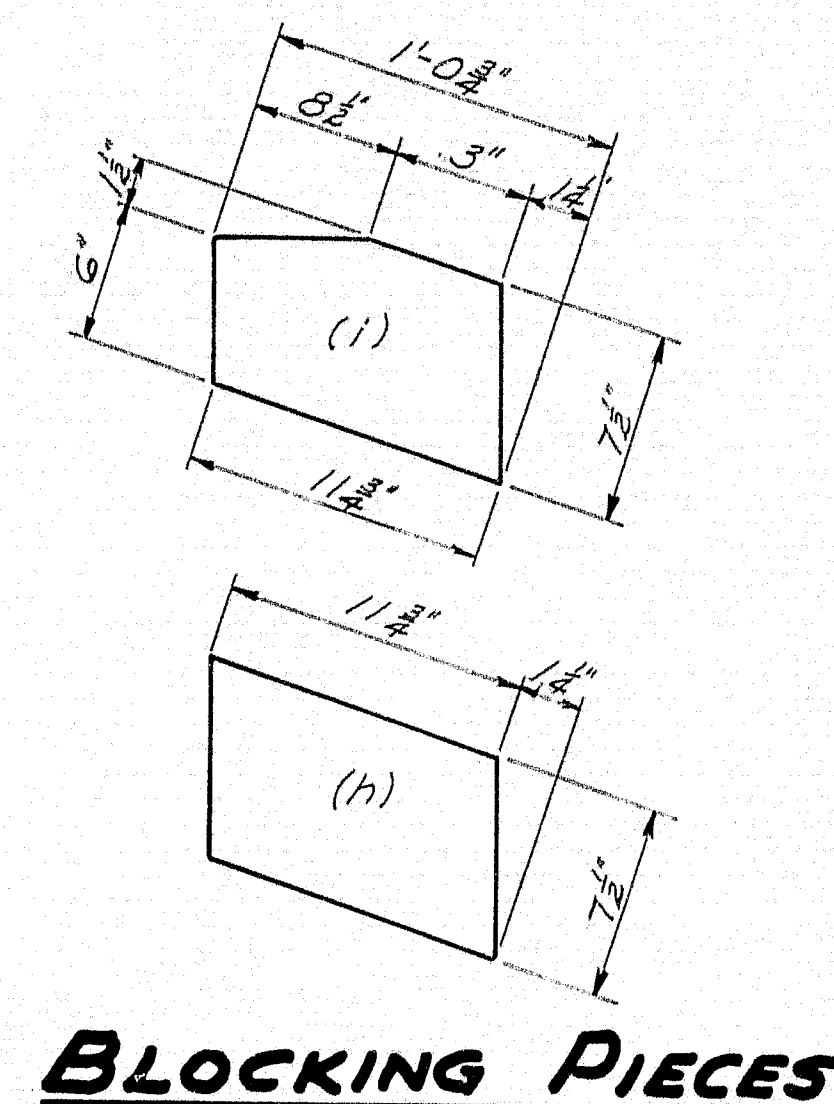
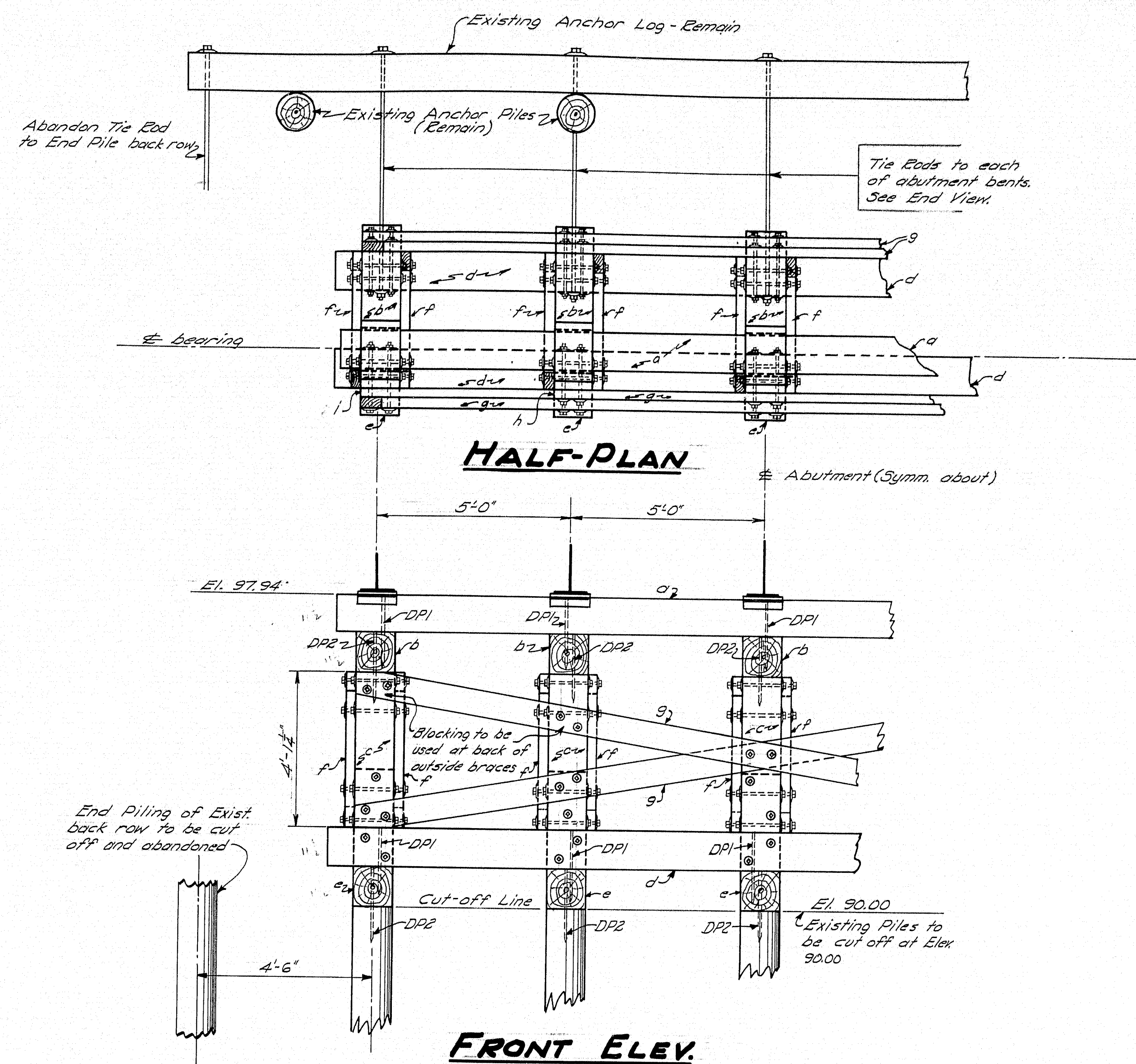
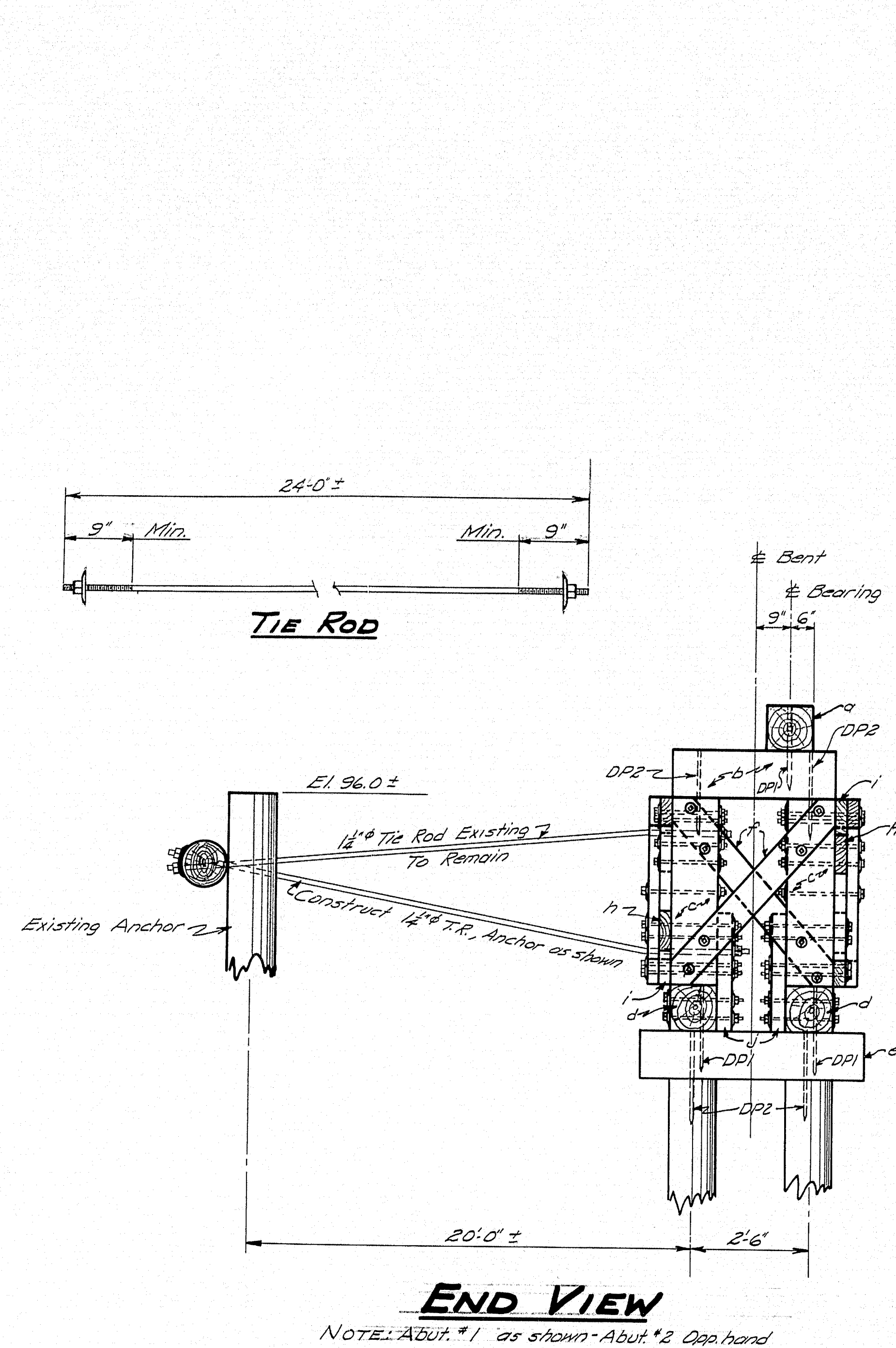
BRIDGE - 2112

STATE HIGHWAY COMMISSION  
BRIDGE DIVISION

**BURNHAM BRIDGE**  
OVER  
**COBBOSSECONTEE STREAM**  
BETWEEN THE TOWNS OF  
**W. GARDINER & LITCHFIELD**  
KENNEBEC COUNTY

SUPERSTRUCTURE  
SHEET 2 OF 4 AUGUSTA, MAINE SEPT. 1949





HARDWARE LIST - ABUTMENTS					
No.	SIZE	LENGTH	WASHER	DESCRIPTION	LOCATION
10	1" φ	1'-10"	—	Drift Pins (1)	Bridge Seat to Bent Caps
20	1" φ	1'-10"	—	" (1)	Bent Sills to Pile Caps
20	1" φ	2'-0"	—	" (2)	Bent Caps to Posts
20	1" φ	2'-0"	—	" (2)	Pile Caps to Piles
80	3/8"	1'-6"	Cast - 160	Mach. Bolts	Bent Bracing
80	3/8"	1'-6"	" - 160	"	Abutment Bracing
40	3/8"	1'-8"	" - 80	"	"
16	3/8"	2'-0"	" - 32	"	"
10	1/2"	24'-0" ±	" - 20	Tie Rods	Anchorage

All hardware to be galvanized

TIMBER SCHEDULE - ABUTMENTS					
MARK	FIN. SIZE	LENGTH	TREATMENT	No.	LOCATION
a	11 1/2" x 11 1/2"	22'-0"	—	2	Abutments - Bridge Seat
b	—	3'-6"	—	10	Bent Caps
c	—	4'-1 1/2"	—	20	" Posts
d	—	22'-4"	—	4	" Sills
e	11 1/2" x 11 1/2"	4'-10"	—	10	Pile Caps
f	2 3/8" x 7 1/2"	5'-5"	—	20	Bent Bracing
g	—	21'-8"	—	8	Abutment Bracing
h	—	1'-1"	—	8	Blocking Piece - Interior Bents
i	2 3/8" x 7 1/2"	1'-1"	—	8	" " - Exterior "
j	3 3/8" x 1 1/2"	2'-6"	—	20	Scabbing, Bent Posts to Sills

DESIGN - MACDONALD  
TRACE - CLARK  
CHECK - *CL*

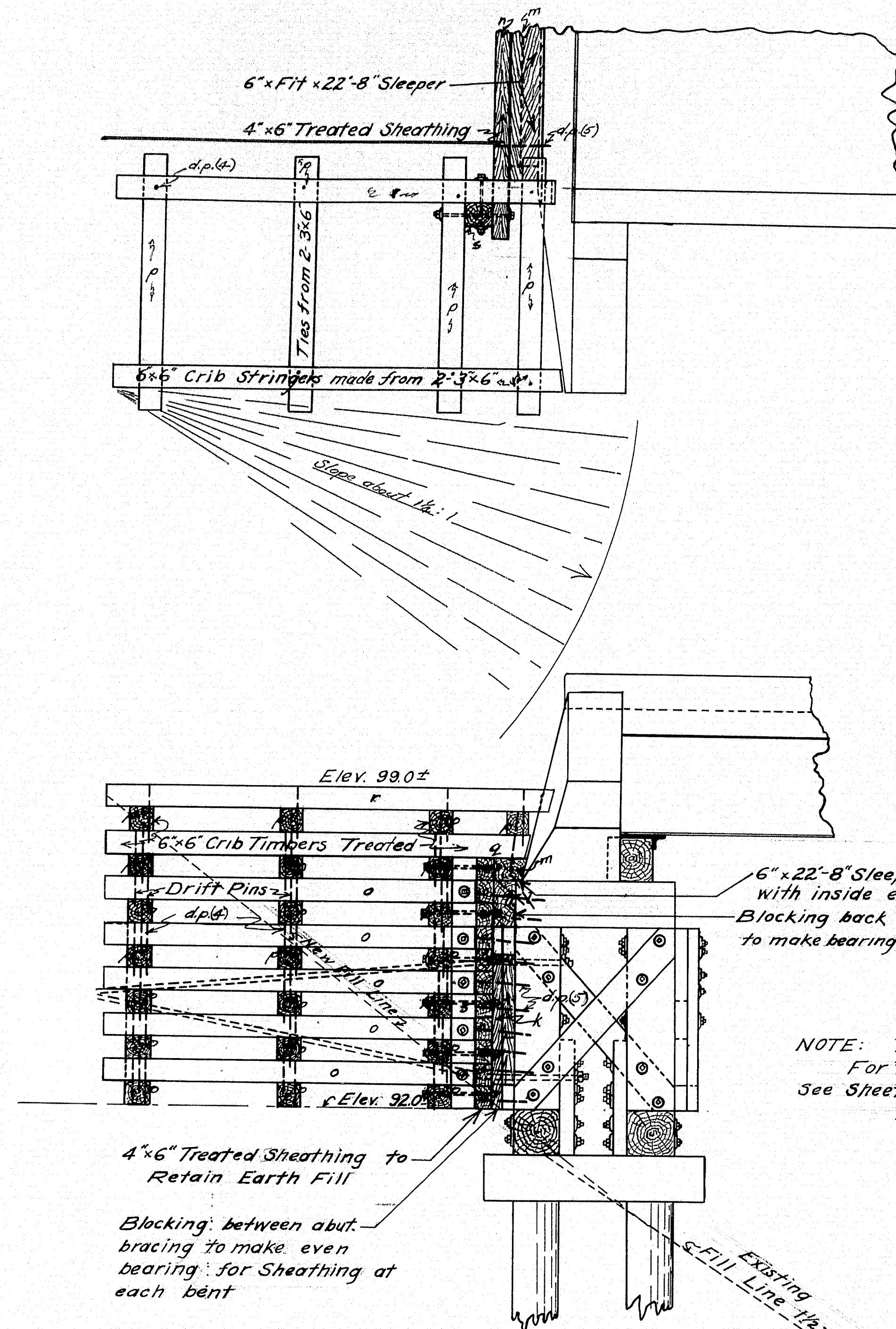
BRIDGE - 2112

STATE HIGHWAY COMMISSION  
BRIDGE DIVISION

**BURNHAM BRIDGE**  
OVER  
**COBBOSSECONTEE STREAM**  
BETWEEN THE TOWNS OF  
**W. GARDINER & LITCHFIELD**  
**KENNEBEC COUNTY**  
ABUTMENTS

SHEET 5 OF 4 AUGUSTA, MAINE SEPT. 1949





6" x 22" x 8" Sleeper - End to be flush with inside edge of inside crib strg. Blocking back of Bent Cap to make bearing for Sheathing

NOTE:  
For details of abutment  
See Sheet No. 3

NOTE:

Timbers shown as 6" x 6" to be made of two pieces of 3" x 6"  
Pieces a, p, q, and r to be on flat

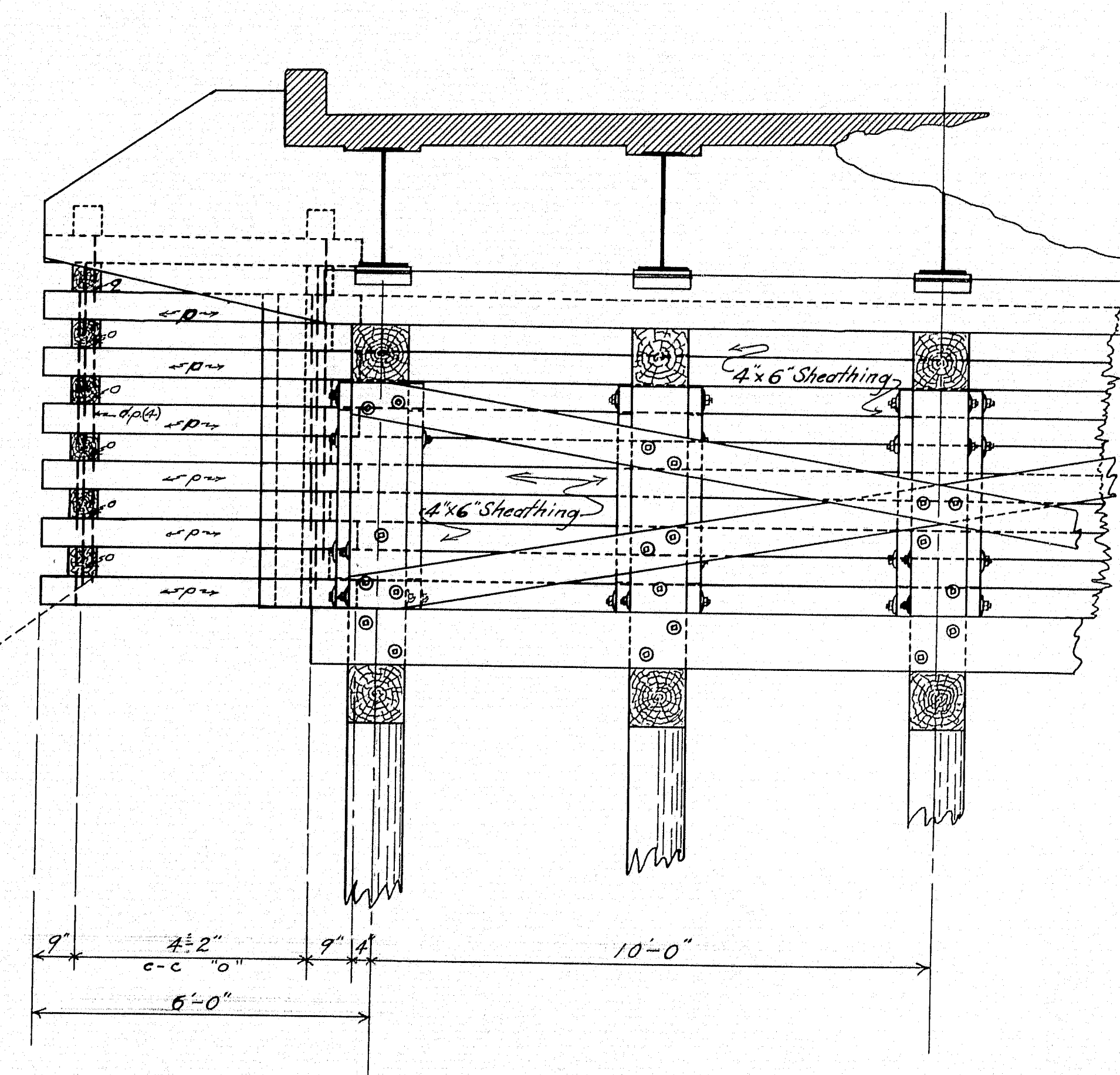
Timber - Salvage from Sheepscott River Br. Wiscasset - Edgecomb

#### HARDWARE LIST - ABUTMENTS

No.	SIZE	LENGTH	WASHER	DESCRIPTION	LOCATION
20	3/8"	1'-2"	Cast 2	Mach. Bolts	Bolting Piece to Crib
24	3/8"	1'-6"	Cast 2	Mach. Bolts	Sheathing to Crib
328	3/8"	1'-4"	—	Drift Pins (4)	Crib
120	3/8"	1'-6"	—	Drift Pins (3)	Sheathing

#### TIMBER SCHEDULE - ABUTMENTS

MARK	SIZE	LENGTH	TREATMENT	No.	LOCATION
S	6" x 6"	5'-6"		4	Bolting Piece-Crib
K	2 5/8" x 7 1/2"	As Needed		10	Blocking under Ret. Sheathing (Center on Bent Cap)
L	5 1/2" x 11 1/2"	1'-6"		2	Blocking under Ret. Sheathing (Left)
M	6" x 10"	22'-8"		22	Retaining Sheathing (Left)
N	4" x 6"	24'-3"		40	Crib Stringers
O	6" x 6"	10'-0"		88	Crib Ties
P	6" x 6"	5'-8"		8	Crib Stringers
Q	6" x 6"	11'-6"		8	Crib Stringers
R	6" x 6"	12'-0"		8	Crib Stringers



DESIGN - MACDONALD  
TRACE - MACDONALD  
CHECK - PL

BRIDGE - 2112

STATE HIGHWAY COMMISSION  
BRIDGE DIVISION

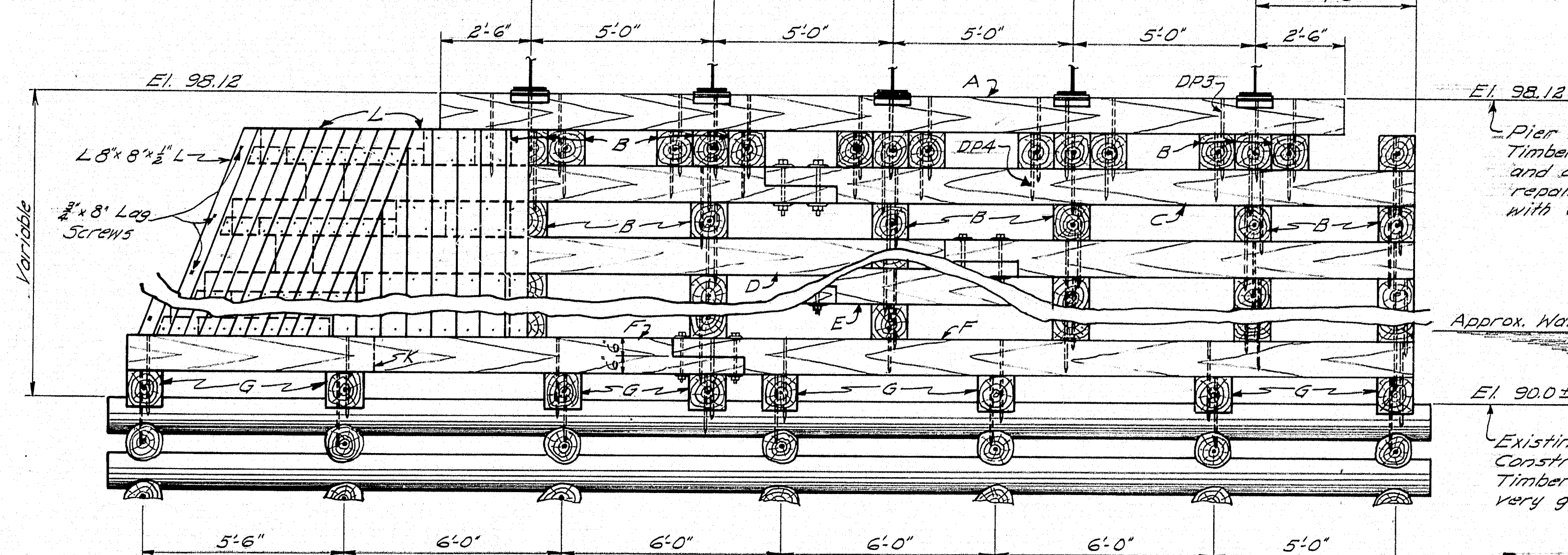
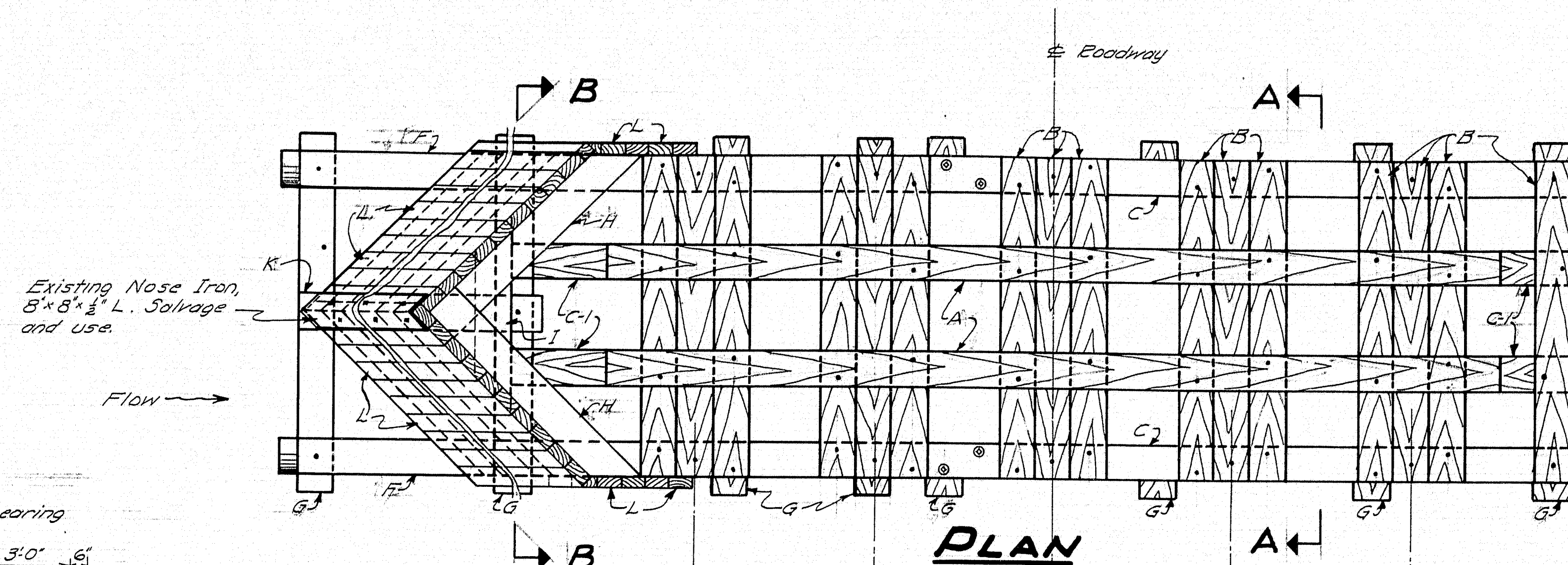
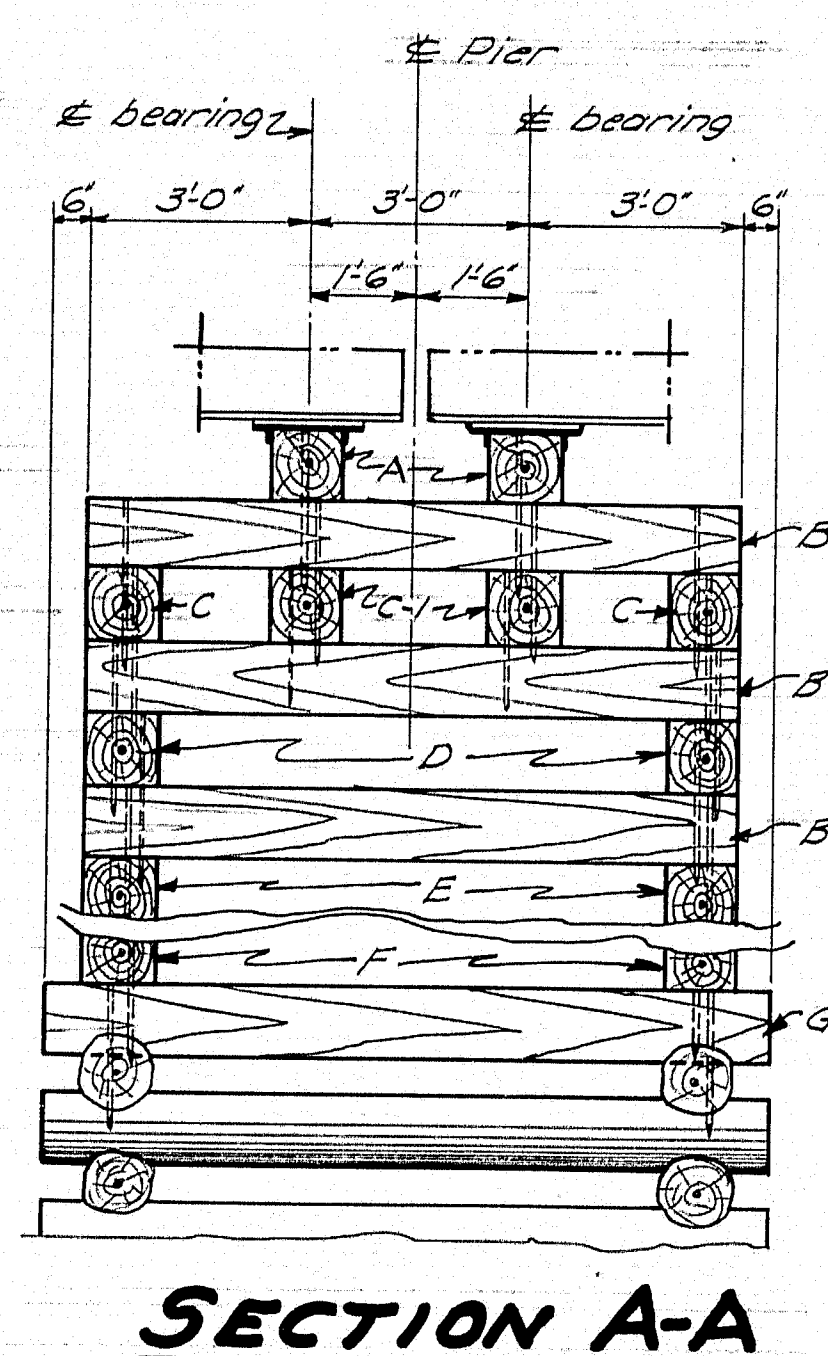
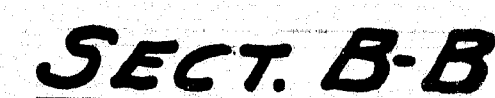
**BURNHAM BRIDGE**  
OVER  
**COBBOSSECONTEE STREAM**  
BETWEEN THE TOWNS OF  
**W. GARDINER & LITCHFIELD**  
**KENNEBEC COUNTY**  
ABUTMENTS

SHEET 3A OF 4 AUGUSTA, MAINE JAN. 1930

47-17A

0 1 2 3 4 5 INCHES





### ELEVATION

Timbers may be notched if necessary, and any cutting of timbers to be repaired by painting the scarf with Creosote.

Approx. Water El. 92.0

 $El\ 90.0 \pm$ 

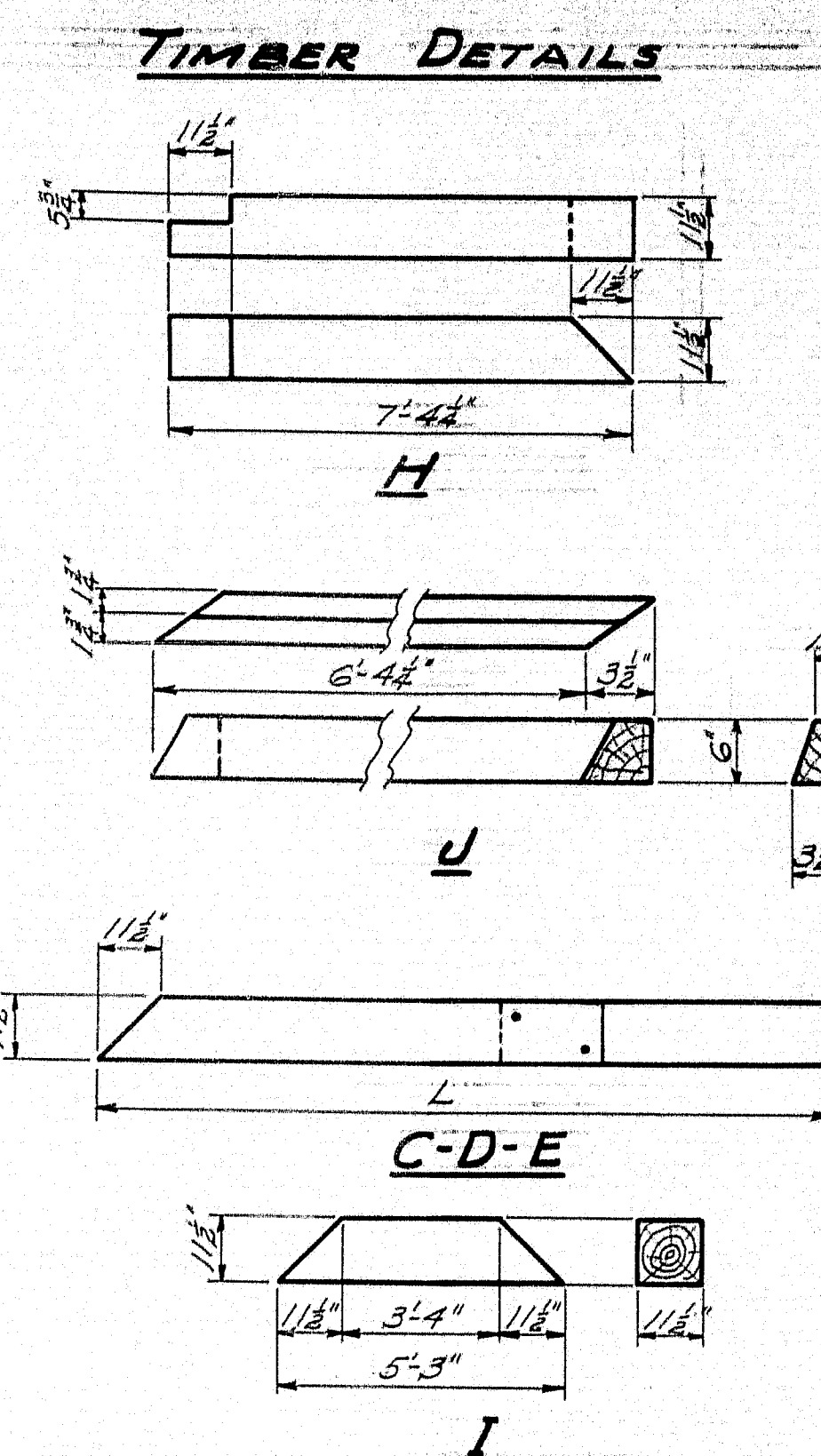
Existing Crib to be removed to El. 90±.  
Construction of new top to begin with Tie  
Timbers (G), unless existing ties are in  
very good condition.

**DRIFT PINS:** DP4 to be used where only two tiers of timbers line up, otherwise use DP3

TIMBER SCHEDULE (PIER)						
MARK	NO.	LENGTH	TREATMENT	FIN. SIZE	REMARKS	
A	2	25'-0"	CRIPPLED 7/11" x 11 1/2" PROCESS	1 1/2" x 11 1/2"	Bridge Seats - 1	
B	34	9'-0"		28'-8"	Tie Timbers - Transverse	
C	2	28'-8"			Longitudinal Timbers	
C-1	2	29'-8"			" "	
D	2	29'-8"			" "	
E	2	30'-5"			" "	
F	2	35'-0"			" "	
G	8	10'-0"				Timbers - Bottom Ties
H	8	7'-4 1/2"				Nose Timbers - See Detail
I	9	5'-3"			1 1/2" x 11 1/2"	" Blocks - " "
J	8	6'-7 3/4"		See Detail	Soaking Pieces - " "	
K	1	7'-0"		1 1/2" x 11 1/2"	Nose Support	
L	34	8'-0" ±		3 3/8" x 7 1/2"	Nose Planking - as shown	

HARDWARE SCHEDULE (PIER)					
TYPE	No.	SIZE	LENGTH	WASHERS	REMARKS
Machine Bolt	24	3/4"	1'-2"	48 - Cast	Nutplates & Nuts
Drift Pins (DP's)	158	1" #	2'-4"		
" " (DPA)	72	1" #	1'-0"		
Lag Screws	8	3/4"	8"	8 - Std.	Nose Iron
Spikes	320		10"		Nose Planking

All hardware to be furnished galvanized



DESIGN -- MACDONALD	
TRACE -- CLARK	
CHECK -- <i>CS</i>	BRIDGE -- 2112
STATE HIGHWAY COMMISSION	
BRIDGE DIVISION	
BURNHAM BRIDGE	
OVER	
COBBOSSSECONTEE STREAM	
BETWEEN THE TOWNS OF	
W. GARDINER & LITCHFIELD	
KENNEBEC COUNTY	
PIER	
SHEET 4 OF 4	AUGUSTA, MAINE SEPT. 1949

SHEET 4 OF 4 AUGUSTA, MAINE SEPT. 1949